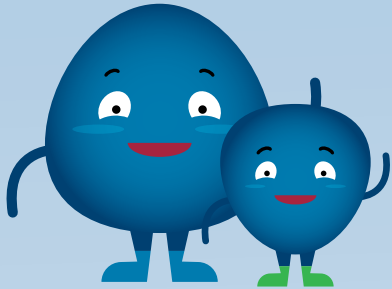


# COVID-19 SHOULD I COME TO SCHOOL?



## HOW TO SCREEN FOR COVID-19

### IF I HAVE:

### THEN:

**1 NO SYMPTOMS**



**Proceed to school**

**2 EXPOSURE,  
NO SYMPTOMS**



**Cannot go to school**

Home for 14 days since exposure

**3 DIAGNOSIS,  
NO SYMPTOMS**



**Cannot go to school**

Home for 10 days since first positive COVID-19 test

**4 AT LEAST 1 SYMPTOM**  
.....

- Fever
- Chills
- Shortness of breath/  
breathing difficulty
- New cough
- New loss of taste or smell



**Cannot go to school**

Home until:

- 10 days since first symptoms
- No fever for 3 days (without fever medicine)
- 3 days of symptom improvement, including coughing and shortness of breath



West Virginia DEPARTMENT OF  
**EDUCATION**

