

2020-2021

CLAY COUNTY SCHOOLS RE-ENTRY PLAN



Joe Paxton

Superintendent, Clay County Schools

TABLE OF CONTENTS

Message from the Superintendent.....	2
Blended Model Snapshot.....	3
School Calendar Dates.....	4
Returning to Caring, Commitment, and Success Definitions.....	5
Curriculum Delivery and Re-entry Options.....	6
Re-entry into Clay County Schools.....	7
Clay County Schools Re-entry Task Force.....	8
Focus Areas/Minimizing Exposure.....	9
Considerations for re-entry.....	10
Roadmap for Attendance.....	11
Re-entry Phases/Blended Instruction	12
Remote Learning.....	13
Monitoring and Handling of COVID-19.....	14
Protecting Vulnerable Populations.....	15
Social and Emotional Wellness/Cleaning and Hygiene.....	16
General Precautions for Custodial Staff/Water & Ventilation Systems.....	17
School Food Service.....	18
Transportation/Communications.....	19
Virtual School/Resources.....	20

MESSAGE FROM THE SUPERINTENDENT

Dear Clay County Staff, Students, and Community,

I am excited to announce that Clay County Schools are making plans for school re-entry on September 8, 2020. In these uncertain times, school re-entry will look different than it has in past school years. With the COVID-19 pandemic upon us, Clay County Schools will strive to provide our students with the safest academically engaged school year possible.

Through diligent planning, we are able to present our families with two curriculum delivery re-entry options for the 2020-2021 school year. Option one is a blended model of in-person and distance learning. This option has three potential phases of re-entry. Phase I will be a “normal” re-entry with regular schedules and activities. Phase II will be comprised of in-person and distance learning. Elementary and Middle School students will attend school four days per week with one day absent of students (Wednesday) for deep cleaning and sanitization. High School students will be divided into A (Mon/Tues) and B (Thurs/Fri) groups, with students attending on A or B days with one day absent of students (Wednesday) per week for deep cleaning and sanitization. Alternating High School A and B day groups will also provide additional spacing on county transportation, in turn providing Elementary and Middle School students with more in-person opportunities at school. This model will also provide younger students with much needed social and emotional wellness. All Elementary, Middle, and High School students will receive five days of engaged learning per week. On days that students do not attend in-person classes, students will participate in distance learning. Along with five days per week of engaged student learning, student meal service will also be provided. Phase III will be a remote learning model with school closure. All Clay County students will tentatively re-enter school in September 2020 under Phase II. Option two is virtual learning provided by Clay County Instructors using the WV Virtual School Platform. You will find details outlining both options within this document to help guide your decision-making process.

While returning to school is imperative, it must be done in a manner that is safe for our students and staff. Clay County Schools are dedicated to providing a caring, committed, and successful plan for re-entry. We are working diligently to take the necessary steps to safe guard everyone’s health. Until we are able to return to “normal” school operations, we will continue to take important steps to plan the safest re-entry possible.

Clay County Schools would like to take this opportunity to thank you and all of our vested stakeholders for your continued support. It takes a village to raise a child and a community to educate one. Your support and guidance is integral in making our re-entry a success.



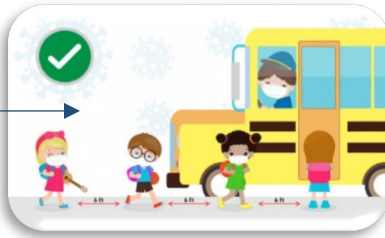
Joe Paxton
Superintendent, Clay County Schools

CLAY COUNTY SCHOOLS

Blended Model: In-Person Snapshot

TRANSPORTATION

Assigned seating with two students per seat and social distancing when boarding or exiting buses. Families may be seated together. Students will be required to wear face coverings on buses. Drivers will be required to wear face coverings when students are boarding or exiting



ADDITIONAL PRECAUTIONS

Limit non-essential visitors, field trips, and large gatherings and/or assemblies



WINDOWS & OUTDOOR SPACES

Utilize for fresh air and learning where applicable

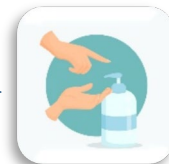


MULTIPLE ENTRY POINTS

To promote social distancing

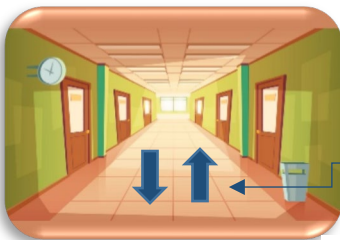
HAND SANITIZING STATIONS

Availability throughout buildings



PERSONAL SPACE DESK DIVIDERS

Utilize for elementary students for better social distancing



TRAFFIC PATTERNS AND SPACING

Maintain social distancing

HAND WASHING

Teach appropriate techniques and promote frequent hand washing



CARE ROOM

Available for individuals displaying symptoms



WATER BOTTLE FILLING STATIONS

Replacing traditional water fountains to reduce the spread



SOCIAL DISTANCING

In various areas outside of Core Groups such as hallways, cafeterias, playgrounds, gym, lockers, library, restrooms, etc. Students will have assigned seating, limited shared materials, and supplies



FACE COVERINGS

Requirements are based on WVDE/WVDHHR guidance



CLAY COUNTY SCHOOLS

SCHOOL CALENDAR DATES 2020-2021

FIRST DAY FOR 200 DAY EMPLOYEES:
AUGUST 25, 2020

FIRST DAY FOR STUDENTS K-12 STAGGERED RE-ENTRY:
SEPTEMBER 8-14, 2020
SEPTEMBER 8, 2020: GRADES 4, 5, 8, MON/TUES (A Group) GRADES 9, 10
SEPTEMBER 9, 2020: NO IN-PERSON STUDENTS
SEPTEMBER 10, 2020: GRADES 2, 3, 7, THURS/FRI (B Group) GRADES 9, 10
SEPTEMBER 11, 2020: GRADES K, 1, 6, THURS/FRI (B Group) GRADES 11, 12
SEPTEMBER 14, 2020: K-8, MON/TUES (A Group) GRADES 11, 12
SEPTEMBER 15, 2020: BEGIN BLENDED MODEL SCHEDULE

FIRST DAY FOR PRE-K STUDENTS
SEPTEMBER 21, 2020

ELECTION DAY, NO SCHOOL:
NOVEMBER 3, 2020

VETERAN'S DAY, NO SCHOOL:
NOVEMBER 11, 2020

THANKSGIVING BREAK, NO SCHOOL:
NOVEMBER 23-27, 2020

CHRISTMAS BREAK, NO SCHOOL:
DECEMBER 24, 2020 – JANUARY 1, 2021

MARTIN LUTHER KING JR. DAY, NO SCHOOL:
JANUARY 18, 2021

SPRING BREAK, NO SCHOOL:
APRIL 2-9, 2021

MEMORIAL DAY, NO SCHOOL:
MAY 31, 2021

LAST DAY FOR STUDENTS:
JUNE 1, 2021

LAST DAY FOR 200 DAY EMPLOYEES: JUNE 3, 2021

SAFETY THROUGH CARING, COMMITMENT, AND SUCCESS

CLAY COUNTY SCHOOLS

Return to Caring, Commitment, and Success Definitions

DEFINITIONS

Blended Model: In-Person/Distance Learning – elementary and middle school students will attend school four days per week with one day absent of students for deep cleaning and sanitization. High school students will be divided into A and B day groups, with students attending on A or B days with one day absent per week for deep cleaning and sanitization.

Remote Learning – This will only occur by executive order from the Governor. Students will follow remote learning platform utilizing TEAMS, IXL curriculum, and teacher resources.

Virtual Learning – learning that takes place solely online (all curriculum, activities, etc. occur in the West Virginia Virtual School (WVVS) online platform with a Clay County teacher who interacts with the student concerning the class specific content, assignments, assessments, grades, etc.)

Virtual Learning Coordinator /Facilitator - a licensed educator who is employed by Clay County Schools to manage the day-to-day oversight of the virtual school and serves as a liaison between the provider, virtual teacher, school of record, and the virtual student/parent/guardian.

Home School – students are not enrolled in Clay County Schools. Curriculum and instruction are the responsibilities of the parent/guardian.





OPTION 1

BLENDED MODEL

- * Students attend in person and participate in distance learning
- * Students and staff are top priority
- * CDC and WVDE/DHHR guidance and health officials recommendations implemented
- * Students will receive lessons in-person and through distance learning
- * Distance learning platform will incorporate IXL, TEAMS, and teacher resources
- * Participation in WVSSAC activities permitted

OPTION 2

WEST VIRGINIA VIRTUAL SCHOOL

- * Students receive instruction via the WV Learns platform utilizing Clay County Instructors
- * WVVS curriculum
- * Students can transition into and out of WVVS to Option 1
- * College and Career Readiness Standards
- * Participation in student meal program
- * Participation in WVSSAC activities permitted



Clay County Schools Re-entry Plan



RE-ENTRY INTO CLAY COUNTY SCHOOLS

On March 13, 2020, as per the Governor's directive, Clay County Schools along with all schools in the state of West Virginia were closed due to the threat of COVID-19. West Virginia schools remained closed for the remainder of the 2019-2020 school year. In response to the closure, Clay County Schools acted swiftly and appropriately to ensure the continuation of instruction through distant learning. Clay County staff worked diligently to deliver instruction and critical services during the closure. Students were able to access distant learning through our county website and were provided alternative learning packets for those without internet service or devices. Educators were available daily through e-mail, Live Grades, texts, phone calls, Zoom, Facebook, and personal contacts.

Although Clay County educators and staff provided our students with instruction and critical services, it is imperative that Clay County Schools make every effort to safely bring our students back into our schools. Clay County Schools know how important it is for every student to grow academically. Clay County Schools also acknowledge that our students have suffered losses through the lack of access to emotional support and health services. These losses have been significant for our students who have endured social-emotional and/or physical trauma outside of school.

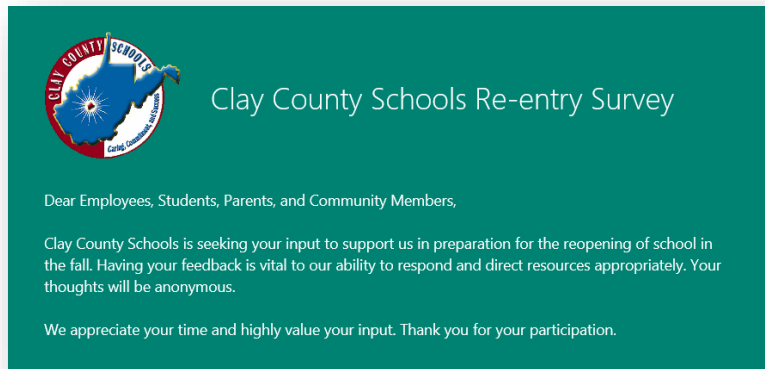
Clay County Schools must prepare for re-entry into our schools. Clay County Schools are committed to providing our students with a safe school environment where all students will grow. As we start on this path forward to re-entry, Clay County Schools will remain vigilant and flexible. In the event of a resurgence of COVID-19, Clay County Schools will make considerations for individual school closures and county-wide closure. Contingencies will be in place following the requirements of the State of West Virginia, the Governor, CDC, Health Department, WVDE, CCBOE, and other governing agencies.

In addition to the Clay County Schools Re-entry Plan, CCS will have a Re-entry task force comprised of key stakeholders who will assist in developing and revising a re-entry plan to ensure the safety and well-being of our students. The Re-entry task force will consider nine focus areas for our student's re-entry into school.

CLAY COUNTY SCHOOLS RE-ENTRY TASK FORCE

ELEMENTARY SCHOOL LEVEL	MIDDLE SCHOOL LEVEL	HIGH SCHOL LEVEL
Joe Paxton, Superintendent	Joe Paxton, Superintendent	Joe Paxton, Superintendent
Joan Haynie, Assist. Superintendent	Joan Haynie, Assist. Superintendent	Joan Haynie, Assist. Superintendent
Tina Burnette, Admin. Assistant	Tina Burnette, Admin. Assistant	Tina Burnette, Admin. Assistant
Eric Legg, Special Services	Eric Legg, Special Services	Eric Legg, Special Services
Jared Fitzwater, Student Services	Jared Fitzwater, Student Services	Jared Fitzwater, Student Services
Michelle Paxton, Principal	Leslie Goe, Principal	Crystal Gibson, Principal
Steve Boggs, Principal	Barry Payton, Assist. Principal	Allen Tanner, Assist. Principal
Jamela Krajewski, Principal	Kasey Brown, School Counselor	Robert Morris, Director CTE
Britni Ramsey, Principal	Alicia Johnson, School Nurse	Kelly Tanner, School Psychologist
Mistie Legg, Assist. Principal	Karrie Mace, School Psychologist	Leslie Osburn, School Counselor
Felicia Nutter, School Psychologist	Sonya Hatfield, School Psychologist	Jennifer Moore, School Nurse
Jami Laughlin, School Counselor	Dave Mullins, CCBOE President	Karrie Mace, School Psychologist
Lindsay Schoolcraft, School Nurse	Angela Brown, CCHD	Sonya Hatfield, School Psychologist
Karrie Mace, School Psychologist	Michael Barrs, Service Personnel	Dave Mullins, CCBOE President
Sonya Hatfield, School Psychologist	Brittany Dolly, Professional	Angela Brown, CCHD
Dave Mullins, CCBOE President		Michael Barrs, Service Personnel
Angela Brown, CCHD		Brittany Dolly, Professional
Michael Barrs, Service Personnel		
Brittany Dolly, Professional		

In addition to Clay County Schools Re-entry Task Force, the following community survey was posted on claycountyschools.org for public comment.



1. What is your connection to Clay County Schools? *

- Student
- Parent
- Employee
- Principal
- Teacher
- Community Member
- Other

2. What Clay County Schools grade level are you associated with? *

- Elementary School
- Middle School
- High School

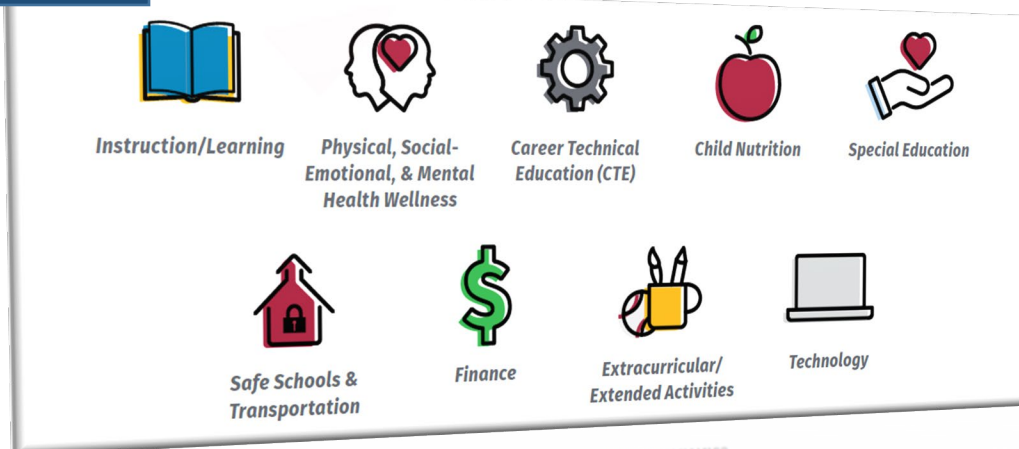
3. Please give us your thoughts and feedback regarding Clay County Schools re-entry this Fall. *

Enter your answer

Submit

Results from the community survey were used in the development of the Clay County Schools Re-entry plan in conjunction with all stakeholders, the CCS Re-entry Task Force, and collaborative partners. Along with this data, the following nine focus areas will impact CCS Re-entry plan as outlined by the West Virginia Department of Education.

FOCUS AREAS

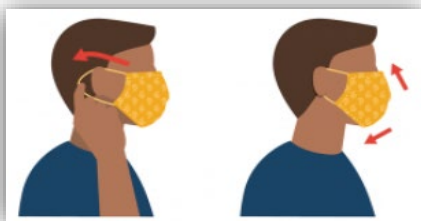


All nine focus areas will be considered when developing Clay County Schools Re-entry Plan. Additional information about focus areas can be found at wvde.us/covid19.

MINIMIZING EXPOSURE

Clay County Schools re-entry plan will differ from school to school. Elementary and Middle School students will attend four days a week with one day for deep cleaning and sanitization. High school students will attend two days per week with alternating schedules for A and B day groups, block scheduling and one day for deep cleaning and sanitization. This plan for re-entry and scheduling is a consideration from the WVDE recommendations and to help minimize exposure. In considering minimizing exposure, Clay County Schools will consider the following:

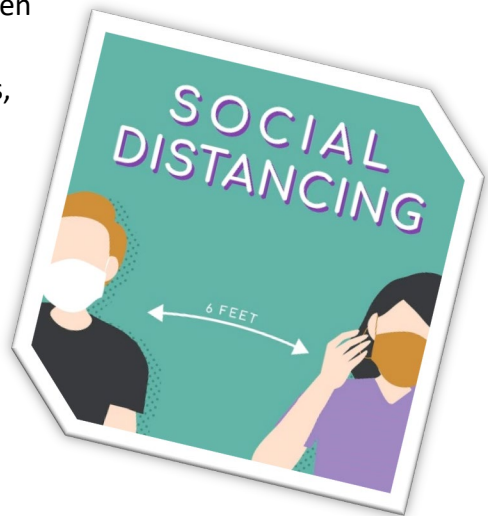
- Face Coverings



- Face coverings will be required for the following:

- On county transportation; school buses (K-12)
- When students are not with core groups (3-12)
- During transition from one location to another
- In hallways and congregant settings
- When students are unable to social distance
- When there are active cases of COVID - 19
- As a part of health and safety protocols
- Students in grades Pre-K through 2 are strongly encouraged to wear masks
- When feasible, face coverings and/or masks can be provided

- Social Distancing
 - CCS will provide social distancing markings when appropriate
 - Six feet of spacing will be recommended when available
 - This will include lines and other times when students congregate
 - Social distancing in restrooms and locker rooms
 - Limit nonessential visitors
 - Limit nonessential external groups/organizations
 - Monitor arrival and dismissal
 - Students may report directly to classrooms
 - Minimize opportunities for prolonged exposure
 - Provide staff and students with social distancing procedures and reminders
 - Arrange student seating six feet apart when feasible
 - Designate directional entrances, exits, hallways and classrooms
 - Keep students and staff in core groups when feasible
 - Limit mixing of core groups
 - Suspend large group activities that don't follow social distancing guidelines
 - Conduct events virtually when possible such as field trips, parent/family meetings, and performances



CONSIDERATIONS FOR RE-ENTRY

Clay County Schools re-entry plan will include a three phase approach. Phase I is re-entry under normal circumstances resuming all activities. Phase II is a blended instruction model. Phase III is a remote learning model. All three phases are subject to change at any time or be a combination of learning plans. Clay County Schools will tentatively begin re-entry with Phase II.

The re-entry plan will look different from elementary to middle and high school levels. Elementary and Middle school students will attend four days a week with one day for deep cleaning and sanitization. High school students will attend two days per week with alternating schedules for A and B day groups, block scheduling and one day for deep cleaning and sanitization. Administrators, along with key stakeholders, will develop plans that will best suit the needs of their students. Along with this in-person model, all schools will have a distance learning plan for deep cleaning days as well if the need arises to go strictly to remote learning.

CLAY COUNTY SCHOOLS

Roadmap for Attendance

REMOTE LEARNING MODEL

This model will only occur by executive order from the Governor. Students will utilize Clay County Schools' remote learning platform.

BLENDED LEARNING MODEL

Blended learning is a combination of in-person and distance learning. Elementary and middle school students will attend school four days per week with one day absent of students for deep cleaning and sanitization. High school students will be divided into A and B day groups, with students attending on A or B days with one day absent per week for deep cleaning and sanitization.

5- DAY NORMAL MODEL

Students attend in-person five days per week under normal schedules and activities.



PLEASE NOTE: CLAY COUNTY STUDENTS ENROLLED IN WEST VIRGINIA VIRTUAL SCHOOL WILL NOT BE IMPACTED BY THE ABOVE ROADMAP FOR ATTENDANCE

RE-ENTRY PHASES

PHASE I	PHASE II	PHASE III
5- Day Model	Blended Model	Remote Learning Model
Normal five days per week	Elementary four days per week	0 In-person attendance
Resume regular schedules	Middle four days per week	Executive order by Governor
Resume regular activities	High two days per week	Virtual instruction
	High A & B alter. groups	Remote learning
	All schools one day sanitization	Learning packets
	Elementary one day distance	Possible school closure
	Middle one day distance	Determine hot spots
	High three days distance	Staff will be present
	Staff engages students on DL	School by school assessment
	Elementary in-person/blended	Subject to change as per rec.
	Middle in-person/blended	Risk assessment
	High in-person/blended	
	High A & B groups	
	Daily sanitation	
	Day w/o students deep clean	
	Subject to decrease in-person	
	Subject to increase distance	

In conjunction with Clay County Schools blended instruction model, we will also offer a virtual school program. Virtual school information will be made available to students and parents.

BLENDING INSTRUCTION: In-person and Distance Learning

Pre-K through Grade Five

- Re-entry in September will be **Phase II**
- No in-person one day per week for deep clean/sanitization
- Keep students with a core group throughout the school day
- Provide meals to students in the classroom
- Provide for outdoor recess and/or outdoor instructional class time as space allows
- Provide related arts instruction in the classroom or outside to minimize contact with other students
- Provide push-ins verses pull-outs when applicable
- Staff entering core classrooms will wear face coverings

Grades Six through Eight

- Re-entry in September will be **Phase II**
- Block scheduling to minimize transitions
- Team teaching and team planning that will allow core groups to remain together
- Rotating teachers as opposed to students when possible to keep core groups together
- Schedule electives/related arts with core groups when feasible
- Social distance in Music and PE to minimize transmission of respiratory droplets
- Consider meals in classrooms or limit capacity of cafeteria to 50% by adding additional breakfast and lunch periods along with social distancing

Grades Nine through Twelve

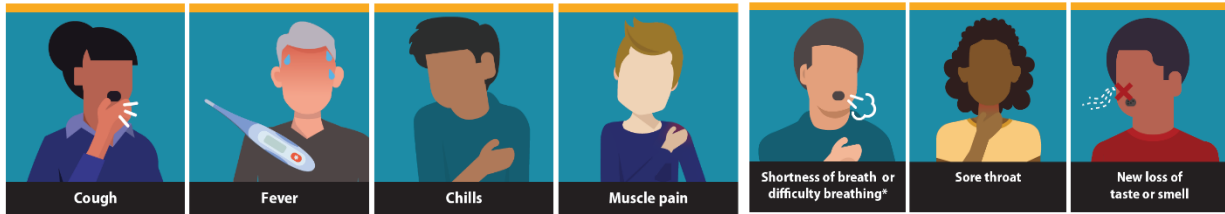
- Re-entry in September will be **Phase II**
- Block scheduling to minimize transitions
- Schedule electives on a rotation to minimize transitions or provide them virtually
- Increase number of lunch periods for social distancing
- Send students directly to class upon arrival
- Social distance in Music and PE to minimize transmission of respiratory droplets
- Consider meals in classrooms or limit capacity of cafeteria to 50% by adding additional breakfast and lunch periods along with social distancing

REMOTE LEARNING

In the event of suspension of in-person learning and school closure, Clay County Schools would implement Phase III (remote learning model). Students will follow remote learning platform utilizing TEAMS, IXL curriculum, and teacher resources. Remote learning plans will include communication between instructional staff and students along with monitoring, reviewing, and assessing student engagement activities. Learning packets will be utilized for students without internet access or devices. Learning activities will also be posted at claycountyschools.org. Remote learning may take place during a temporary, short-term or long-term closure. During remote learning, Clay County Schools will provide school information in a timely manner through our website claycountyschools.org and on Sara the School Messenger. Educational staff will also be available daily through Live Grades, e-mail, phone, text, Zoom, social media, etc.



Know the symptoms of COVID-19, which can include the following:



Symptoms can range from mild to severe illness, and appear 2-14 days after you are exposed to the virus that causes COVID-19.

MONITORING AND HANDLING OF COVID-19

- All Clay County Schools will be required to post the following signage provided by the WVDE (there are two versions of each sign)
 - COVID-19 Should I Come to School
 - Best Health Practices in Your School
- Educate about the signs and symptoms of COVID-19
- Establish and enforce wellness policies to prevent the spread of disease, including:
 - Require staff to stay home if sick
 - Allow flexibility
- Establish a dedicated space for symptomatic individuals
- Isolate symptomatic individuals and then send them home
- Supervise symptomatic students while wearing a face covering and social distancing
- Require the symptomatic person to wear a face covering while waiting to leave
- Cloth face coverings should not be placed on:
 - Anyone who has trouble breathing or is unconscious;
 - Anyone who is incapacitated or otherwise unable to remove the face covering
 - Anyone who cannot tolerate a cloth face covering
- Conduct symptom screening of anyone entering the building. Screening may be provided at school entrances or at the main office.
 - Individuals waiting to be screened should practice social distancing and use floor markings
 - Screeners for temperatures must wear a face covering
 - Use a touchless thermometer
 - If not available, use an ear, arm, or forehead thermometer with disposable covers
 - Do not take temperatures orally
 - Staff member must wash hands or use hand sanitizer before touching the thermometer
 - Staff member must wear gloves when taking temperatures
 - Staff member must clean and sanitize thermometer after usage

- Utilize Symptom Screening Checklist for students
- Anyone who provides direct patient care is required to wear PPE and perform appropriate hand hygiene
- Clean/disinfect after symptomatic person is removed from school
- Symptomatic students must be picked up by parent/guardian or designee
- Staff should make transportation arrangements on individual basis
- Process for return to school:
 - If a person has had a negative COVID-19 test, they can return to school once there is no fever (without the use of fever reducing medicines) and they have felt well for 24 hours
 - If a person is diagnosed with COVID-19 by a medical professional based on a test or symptoms or does not seek medical attention and has symptoms, he or she should not be at school and should stay at home until he or she (or a family member if younger child) can answer YES to the following questions:
 - *Has it been at least 10 days since the individual first had symptoms?*
 - *Has it been at least three days since the individual had a fever (without using fever reducing medicine)?*
 - *Has it been at least three days since the individual's symptoms have improved, including cough and shortness of breath?*
- Notify local health authorities of confirmed COVID-19 cases among children and staff
- Ensure that if a person with COVID-19 was in the school setting while infectious, school administrators coordinate with local health officials to notify staff and families immediately while maintaining confidentiality in accordance with FERPA and all other state and federal laws

PROTECTING VULNERABLE POPULATIONS



- Accommodate students with special health care needs and follow care plans
- Implement a referral process for remote learning if necessary
- Obtain well-child checks for Pre-K, K, 2nd, 7th, and 12th grade students for school nurse review
- Accommodate medically fragile students
- Update all emergency contacts and health records for students on WVEIS
- Use distance learning for students that have been medically identified unable to attend in-person classes
- Provide PPE and disinfecting supplies to staff and students presenting with symptoms
- Follow recommended health care policies and procedures

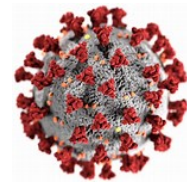
SOCIAL AND EMOTIONAL WELLNESS



- Clay County Schools will utilize their Crisis Response Team
- Provide mental health support
- Provide professional support through school counselors, school psychologists, and school nurses
- Provide continuous supportive relationships for students during any phase of re-entry
- Provide social-emotional standards as adopted by the WVCCR for student success
- Promote a safe and welcoming environment where students can connect with caring adults
- Provide resource mapping when necessary/available
- Utilize school counselors/psychologists to focus on social and emotional well-being
- Continue to utilize referral system for students who need targeted social and emotional support
- Work with existing community agencies to provide additional mental health services
- Identify At-Risk students
- Communicate re-entry plans with stakeholders
- Discipline policies should reflect a trauma-informed approach
- Implement support for each phase of re-entry
- Provide staff with professional development

CLEANING AND HYGIENE

- Students and staff will be provided with supplies for healthy hygiene. Soap dispensers and hand sanitizing dispensers will be installed in schools
- Students will be taught proper hand washing/sanitizing procedure
 - School nurses will utilize hand washing video for elementary students
- Hand sanitizer will be provided throughout schools
- Hand sanitizer use will be monitored
- Soap and water will be utilized first
- Handwashing will be reinforced throughout the day
- Hand cleaning will be required upon entering a room
- Custodians will monitor supplies and refill when necessary
- Encourage staff/students to cough, sneeze into elbows or use tissue
- Dispose of tissues immediately and wash hands/sanitize
- Clean/disinfect high touch areas frequently
- Establish custodial schedule for frequent cleaning and disinfecting
- Disinfect shared objects
- Paper-based materials are not considered high-risk for COVID-19 transmission and do not require additional cleaning/disinfecting
- Properly store cleaning/disinfecting supplies



- Separate student’s personal belongings
- Limit and/or eliminate use of shared classroom supplies and personal items
- Create/use student specific classroom supplies
- Utilize existing cleaning products to reduce allergies if effective against COVID-19
- Remove soft items from classrooms that cannot be disinfected
- Close water fountains

Disinfecting kills germs on surfaces. By killing germs on a surface after cleaning, it can further lower the risk of spreading infection.



GENERAL PRECAUTIONS FOR CUSTODIAL STAFF WHEN COVID-19 HAS BEEN IDENTIFIED

- Refrain from touching face while cleaning
- Wash hands after cleaning
- Wear gloves when cleaning
- Wash hands after removing gloves
- Use disinfectants as per required recommendations



WATER & VENTILATION SYSTEMS



- Follow CDC’s recommendations for reopening buildings
- Ensure safe use of all water systems
- Inspect ventilation systems for safe use
- Close water fountains to minimize spread
- Remove water/sand tables from Pre-K classrooms to minimize germs
- Encourage students to bring and use their own personal water container

SCHOOL FOOD SERVICE



FOOD SERVICE

- Clay County Schools meal program will be implemented in all re-entry phases
- Elementary will have meals in classrooms
- Staggered meal delivery for Elementary
- Middle and High will limit cafeteria capacity to 50%
- Additional meal periods may be added to Middle and High School schedules to facilitate 50% capacity or less
- Spaced meal serving lines for Middle and High
- Spaced seating for Middle and High
- Coordinate food service operations with teachers
- Food service employees will be required to wear face coverings at all times
- Sanitize/clean cafeteria before dine-in service
- Use disinfectants that meet CDC requirements
- Sanitize/clean between meals or groups
- Sanitize/clean kitchen frequently
- Discard any single-use food items left after meal service by students
- Abide by social distancing guidelines
- Follow social distancing guidelines for food disposal by students
- Serve milk/juice in individual bottles
- Clean and sanitize coolers after each group
- Water dispenser levers need cleaned/sanitized frequently
- Eliminate self-serve (includes condiments, napkins, silverware, etc.)
- Eliminate family-style meals/snacks in Pre-K
- Eliminate share tables
- Hand washing is required before meal service
- Follow USDA Civil Rights requirements
- Meal service will continue in Phase III remote learning
- Monitor alternative meal service such as meals in the classrooms
- Utilize existing physical barriers during meal service in cafeterias for Middle and High to minimize contamination
- Provide hand sanitizing stations in cafeterias
- Elementary classroom meal service in classrooms
- Utilize outdoor space for meal service in Middle and High school as practical and appropriate



TRANSPORTATION

- Clay County Schools will utilize alternative schedules as indicated in the Phase II Re-entry plan in September to reduce the number of students on buses
- Students will be limited to two to a seat or more if all are from the same family.
- Buses will be cleaned/sanitized frequently and before all routes
- Buses will be cleaned regularly
- Dispose of cleaning supplies or launder after each use
- Bus doors/windows will be open during cleaning process and absent of students
- All specialized student adaptive equipment will be cleaned/sanitized
- Proper use of cleaning/sanitizing supplies will be implemented
- Hand sanitizer will be provided on buses
- Hand sanitizers will be removed when bus is not in use
- Staff and students will be required to view video “Safe Bus Loading & Unloading Procedures”
- All bus drivers will be required to have seating charts
- Face coverings on buses are required for students K-12 while in transport
- Siblings and anyone who cohabitates should sit together
- Students at same stop should sit in same section of bus
- Design bus loading and unloading procedures that include distancing to minimize contact
- Open windows if feasible
- Have a designated area on bus if student displays COVID-19 symptoms
- Limit number of students entering/exiting at one time



COMMUNICATIONS

- Clay County Schools will continue with reliable communications through the following means
 - Robocalls from “Sarah the School Messenger”
 - School website claycountyschools.org
 - Live Grades
 - E-mail
 - Text
 - Phone calls
 - Newsletters
 - Social Media
 - Online communications
 - Electronic communications



- Re-entry survey (June 2020)
- Utilize Live Grades as primary educator contact for grades 2nd-12th
- Provide updates for re-entry
- Educate staff, students, parents/guardians about COVID-19
- Partner with health department to provide updates to community
- Involve LSIC and parent/community organizations to share information



VIRTUAL SCHOOL

- Students must register as a full-time or part-time student at the school which they would attend
- Students participating in home school or private school are eligible with registration
- Virtual students are eligible for the same activities as in-person students
- Instruction can be provided collaboratively with the WV Virtual School (WVVS) and a Clay County employed teacher
- Courses can be registered based on a variety of schedules
- For grades 9-12, courses have to meet NCAA eligibility requirements
- WVVS offer courses to meet graduation requirements

RESOURCES



- claycountyschools.org
- wvde.us/covid19
- cdc.gov/coronavirus
- dhr.wv.gov

